

FASHION-CAN

FASHION FIGHT CANCER SURVIVOR

22nd To 23rd FEBRUARY 2020, @ DELHI

FIGHT CANCER WITH FASHION WILL
CONTINUE FOR UP TO ... 30 HOURS ...

CONCEPTUALISED BY : ELITE EVENTS

ORGANISED & DESIGNED BY : FGCC

SUPPORTED & GUIDANCE BY : NGO



FASHION CAN





FASHION - CAN

FIGHTING CANCER WITH FASHION, FEATURING KIDS BEATING CANCER. FASHION FUNDS THE CURE..

THIS EVENT IS CREATED TO INSPIRE, EMPOWER AND BRING HOPE TO BEAUTIFUL WARRIORS IN COMMUNITY COPING WITH THEIR CANCER DIAGNOSIS AND TREATMENT. WE CHOOSE 20 OF THESE COURAGEOUS AND DIVERSE KIDS TO BECOME OUR MODELS. THEY WILL CONFIDENTLY WALK THE RUNWAY WEARING THE LATEST VERSION CLOTHES IN A GORGEOUS AND ELEGANT VENUE.

FASHION - CAN IS VENTURED & CONCEPTUALISED BY SHIVANI UPPAL AND SWATI FROM ELITE EVENT.

FASHION -CAN ORGANISED & DESIGNED BY KARAN GUPTA, SANDEEP KASANA, BRIJESH GUPTA, MANISHA SHARMA, ARUN GAUTAM, ASHISH RANA FROM FGCC, FIOXA GLOBAL COMMUNICATION COUNCIL.

FASHION - CAN SUPPORTED BY NGO

FASHION - CAN

THIS EVENT IS CREATED TO INSPIRE, EMPOWER AND BRING HOPE TO BEAUTIFUL WARRIORS IN COMMUNITY COPING WITH THEIR CANCER DIAGNOSIS AND TREATMENT. WE CHOOSE 20 OF THESE COURAGEOUS AND DIVERSE KIDS TO BECOME OUR MODELS. THEY WILL CONFIDENTLY WALK THE RUNWAY WEARING THE LATEST VERSION CLOTHES IN A GORGEOUS AND ELEGANT VENUE.





FASHION-CAN REPRESENTS
THE GREAT WARRIORS WHO
ARE SUFFERING AND WHO
HAVE SURVIVED CANCER WITH
THE GUIDANCE OF CPAA, HERE
WE GONNA FIGHT THE DEADLY
DISEASE LIKE CANCER WITH
THE SUPPORT OF OUR GREAT
SPONSORS, FASHION
EXHIBITORS AND THE
CELEBRITIES WALKING DOWN
THE RAMP WITH THESE GREAT
WARRIORS. THIS CAUSE IS
CONCEPTUALISED BY “ELITE
EVENTS” & ORGANISED AND
DESIGNED BY “FIOXA GLOBAL
COMMUNICATION COUNCIL”.



FASHION CAN



THE JUNIOR MODELS WERE GROOMED THROUGH CREATIVE AND INTERACTIVE SESSIONS. THE SESSION ALSO FOCUSED ON THEIR PERSONALITY GROOMING WHERE KIDS IMPLEMENTED ALL THE LEARNING'S THROUGH VARIOUS PHOTO SHOOTS AND RUNWAY REHEARSAL.



GROOMING SESSION CONDUCTED BY STYLIST (“SANGEETA”).

FASHION WALK (CELEBRITIES, SURVIVOR/PATIENTS KIDS & MODELS) WITH THE DESIGNER OUTFITS.

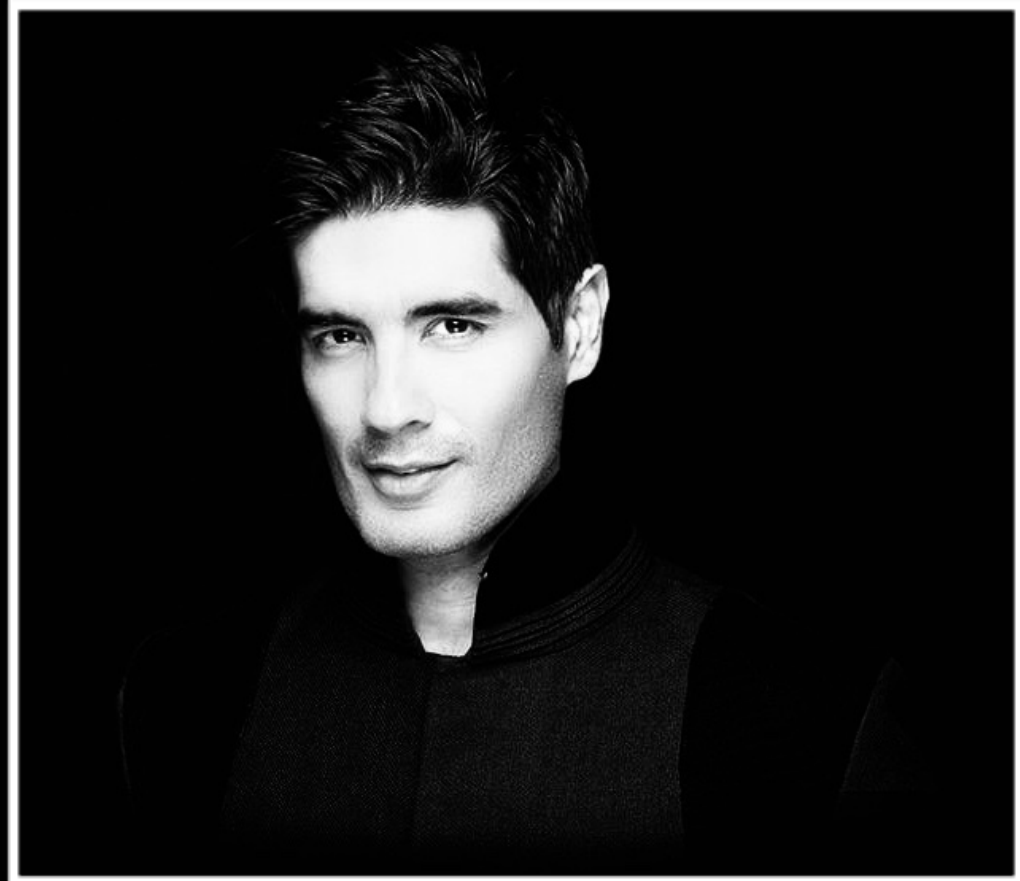
RAMP WALK OF MODELS WITH CANCER SURVIVORS & PATIENTS.

RAMP WALK OF CELEBRITIES WITH CANCER SURVIVORS & PATIENTS.

PROPOSED

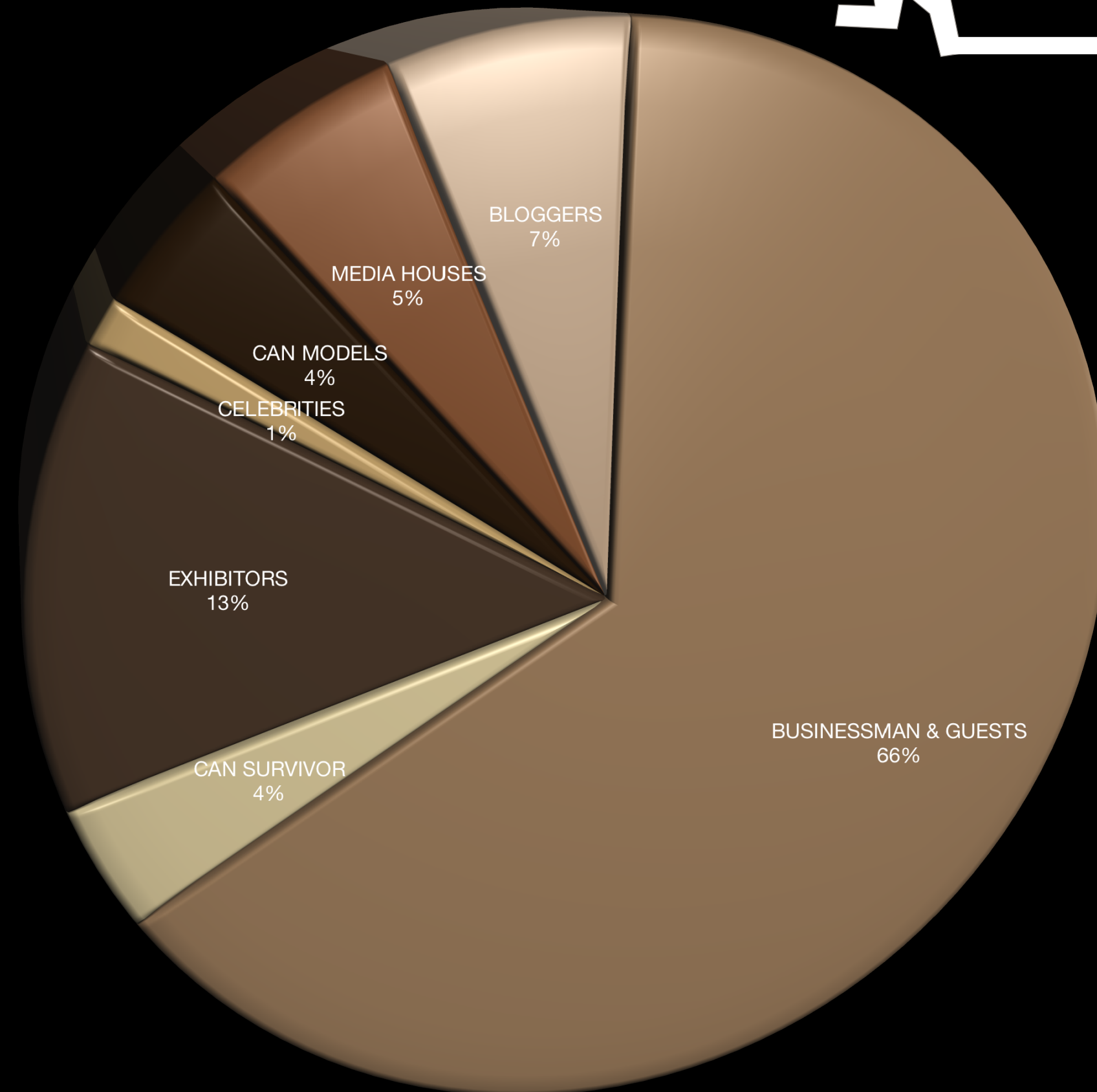


PROPOSED





ATTENDEES



1000+ BUSINESSMAN & GUESTS

50+ EXHIBITORS

50+ INFLUENCERS & BLOGGERS

20+ MODELS

30+ CAN SURVIVOR

30+ MEDIA HOUSES

05+ CELEBRITIES

5000+ CROWD (INVITES, GUEST & HNI GROUPS)



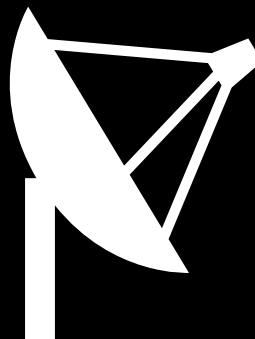
HOSPITAL CEO & CMO



SHOPPING LOVERS



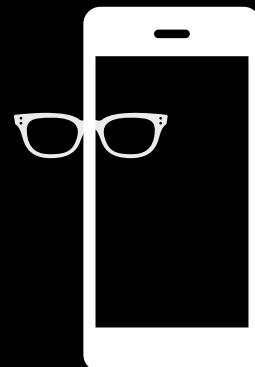
**INVITED BASED
GUESTS**



**RADIO & MEDIA
PERSONS**



CELEBRITY



**INFLUENCERS &
BLOGGERS**



HNI & BUSINESS-MAN



**GOVERNMENT
OFFICIALS**



**MEDIA HOUSES &
EDITORS**



SPENDERS WALK-IN

P
R
O
P
O
S
E
D



PRIDE PLAZA HOTEL, AEROCITY, DELHI

P
R
O
P
O
S
E
D



THE LALIT HOTEL, NEW DELHI



INDOOR EXHIBITION KIOSK AND MODIFIED STALLS SETUP

The Blueprint Exhibition

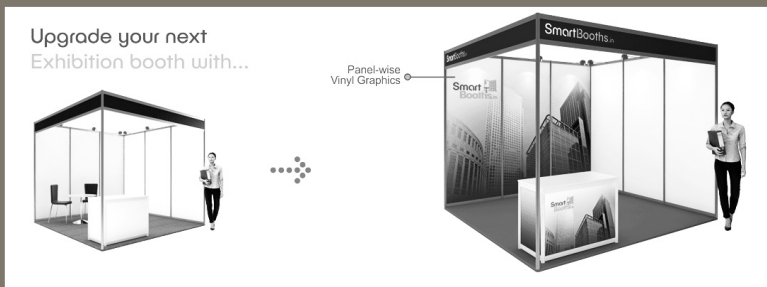
Upgrade your next
Exhibition booth with...



Panel-wise
Vinyl Graphics



SHELL STAND 4.0X3.0M



Fascia with vinyl text

Metal halide spot lights

White panel
954X2388mm(H)

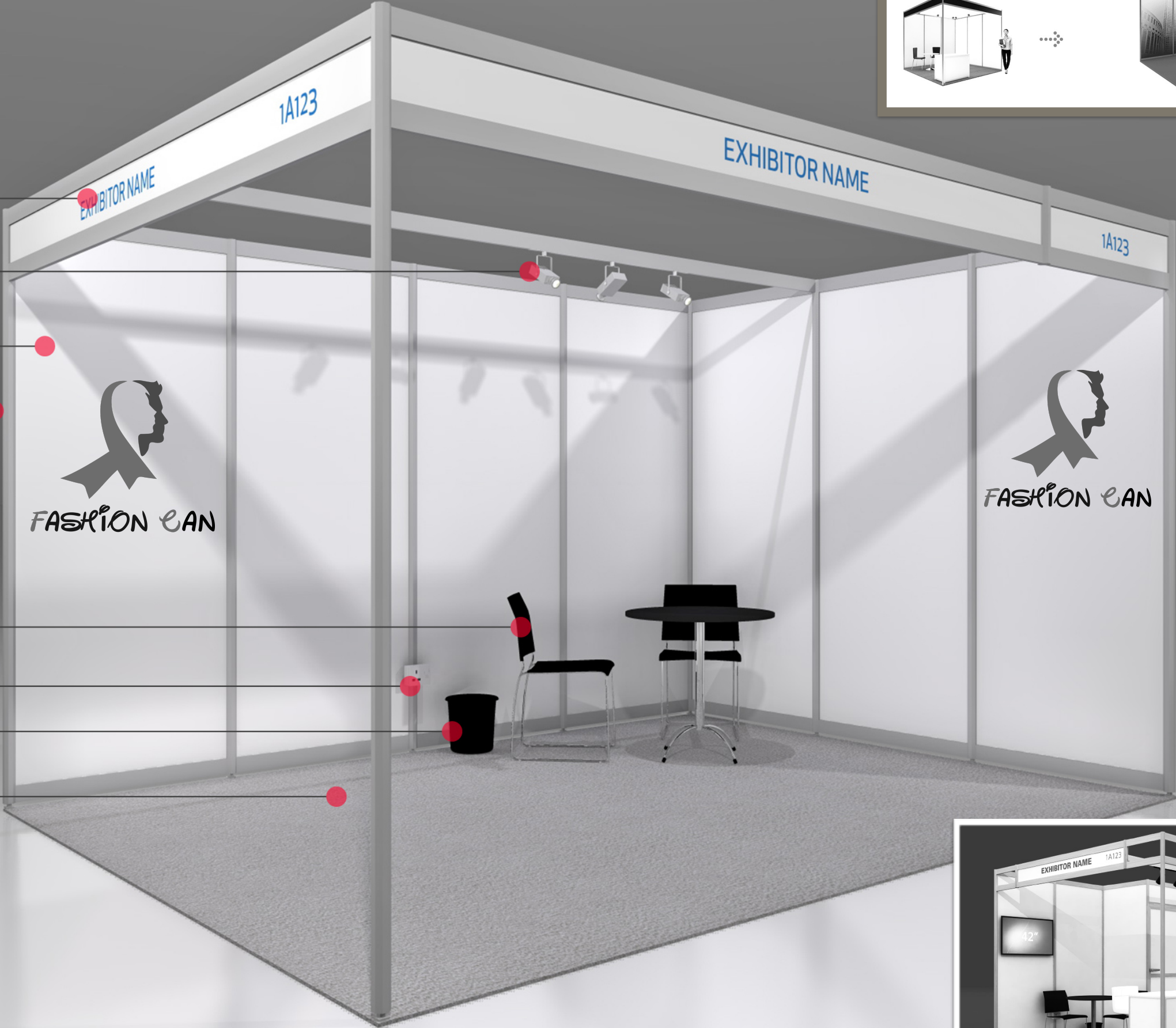
46mm Octa pole

2 ISO chair/ 1 Arc table

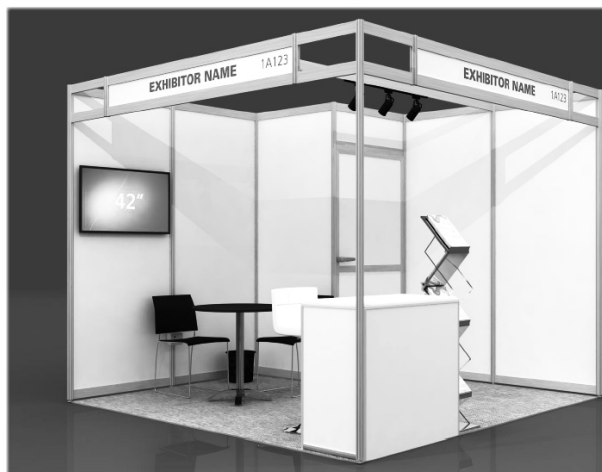
3 PIN Socket
UK standard

Waste bin

Exhibition grade carpet



2500mm



SAMPLE OF BANNERS



FACTS & SYMPTOMS | NGO

Cancer is the uncontrolled growth of abnormal cells in the body. Each cell in the body contains DNA [writing informative essay](#) [personal narrative essay](#) [outline](#) in its nucleus which controls its life cycle. For many reasons, this control mechanism stops working. Old cells do not die and instead grow out of control, forming new, abnormal cells, or a tumour.

Early symptoms of cancer: Usually, early cancer does not cause pain. The signs or symptoms will depend on where the cancer is, how big it is, and how much it affects the

organs or tissues. But sometimes cancer starts in places where it won't cause symptoms until it has grown quite large. Given below are certain general signs and symptoms to watch out for. There may be other causes for each of these, but it's important to see a doctor about them as soon as possible [writing informative essay](#) [personal narrative essay](#) [outline](#) – especially if there's no other cause you can identify, the problem lasts a long time, or it gets worse over time. Do not wait to feel pain.



White patches inside the mouth or white spots on the tongue

Recent change or bleeding in a wart or mole or sores that do not heal

Nagging cough or hoarseness

Excessive weakness or fatigue

Unexplained weight loss or changes in appetite

Indigestion or trouble swallowing

Persistent back pain

Unexplained night sweats

Difficult or painful urination

Unusual bleeding or discharge

Thickening or lump in the breast or other parts of the body

Testicular lumps

Rectal bleeding

Unexplained fevers

Causes of cancer: Though it is very difficult to pinpoint any definite cause, certain substances, known as carcinogens, can definitely increase your chances of getting cancer.

Some cancers are caused by faulty lifestyles. For example, tobacco use can cause cancers of the head and neck region; early menarche and late menopause can cause breast cancer or early marriage, multiple pregnancies, history of sexually transmitted disease and multiple sexual partners can cause cervical cancer.

Overexposure to sun without protection can cause skin cancer.

Exposure to radiation or nuclear fallout can cause cancer. Sometimes, radiation

treatment for one type of cancer can cause another cancer to grow many years later. Certain chemicals have been linked to cancer, too. Being exposed to or working with them can increase a person's risk of cancer.

About 5 – 10 % of all cancers are linked to genes or mutations that are inherited from parents.

Some cancers are caused by viruses- Human papilloma viruses (HPVs)-cervical cancer; Epstein-Barr virus (EBV)-Burkitt lymphoma; Hepatitis B virus (HBV) and hepatitis C virus (HCV)- liver cancer; Human immunodeficiency virus (HIV)- Kaposi sarcoma.

Types of Cancers: Cancers are divided into different types based on where they originate:

Carcinoma: They are the most common types of cancers. A carcinoma begins in the skin or the tissue that covers the surface of internal organs and glands. Carcinomas usually form solid tumours. Examples of carcinomas include prostate cancer, breast cancer, lung cancer, and colorectal cancer.

Sarcomas: A sarcoma begins in the tissues that support and connect the body like the fat, muscles, nerves, tendons, joints, blood or lymph vessels, cartilage or bone. Examples are osteosarcoma, chondrosarcoma, liposarcoma and leiomyosarcoma.

Leukemia: Cancers that begin in the blood-forming tissue of the bone marrow are called leukemia. These cancers do not form solid tumours. A large numbers of abnormal white blood cells build up in the blood and bone marrow, crowding out normal blood cells. The four main types of leukemia are acute lymphocytic leukemia (ALL), chronic lymphocytic leukemia (CLL), acute myeloid leukemia (AML), and chronic myeloid leukemia (CML).

Lymphomas: Lymphoma is a cancer that begins in the immune system of the body i.e. a network of vessels and glands that help fight infection. There are two main types: Hodgkin's lymphoma and non-Hodgkin's lymphoma.

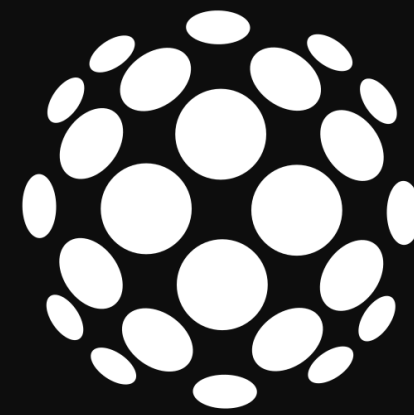
Multiple Myeloma: Multiple myeloma is cancer that begins in plasma cells, another type of immune cell. The abnormal plasma cells, called myeloma cells, build up in the bone marrow and form tumours in bones all through the body.

Melanoma: Melanoma is cancer that begins in cells that make melanin, the pigment that gives skin its colour. Most melanomas form on the skin, but melanomas can also form in other pigmented tissues, such as the eye.

Brain and Spinal Cord Tumours: The central nervous system cancer tumours develop in the brain and spinal cord. These tumours are named based on the type of cell in which they formed and where the tumour first formed in the central nervous system.



EVENT MANAGEMENT



FGCC

Fioxa Global Communication Council





TEAM :- ELITE | FGCC